

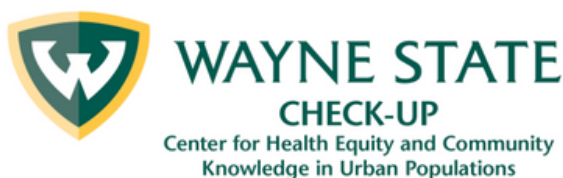
**2024 Community-Engaged Research Summit:
*Building Career Momentum & Income Stability
to Achieve Health Equity***

April 11 & 12, 2024

Acknowledgments

This summit is supported by the Office of the Vice President for Research at Wayne State University and sponsored by Wayne State University's Center for Health Equity and Community Knowledge in Urban Populations and Karmanos Cancer Institute's Office of Cancer Health Equity and Community Engagement.

The Wayne State University & Karmanos Cancer Institute Community Engaged Research Summit Directors and Planning Committee wish to thank everyone who contributed their time and effort in making this event possible, including:



Land Acknowledgment & The Legacy of Native Peoples

Wayne State University rests on Waawiyaataanong (Waa-we-yaa-tih-nong), also referred to as Detroit, the ancestral and contemporary homeland of the Three Fires Confederacy. These sovereign lands were granted by the Ojibwe (Oh-jib-way), Odawa (Oh-daa-waa), Potawatomi (Pow-tuh-waa-tuh-mee), and Wyandot nations, in 1807, through the Treaty of Detroit. Wayne State University affirms Indigenous sovereignty and honors all tribes with a connection to Detroit.

Radical Welcome

Welcoming Transgender/Non-binary/Gender Nonconforming folks

(Adapted from the 2019 Creating Change--National LGBT Task Force—conference program)

To create radical welcome for members of the Transgender, Non-binary, and Gender Nonconforming (Transgender, Transsexual, genderqueer and more) communities please remember that a person's purposeful gender expression or external appearance may not match their internal gender identity.

About pronouns:

- In this space, we are committed to not making assumptions about anyone's gender identity based on the way they look, sound, or behave.
- Ask "What pronouns do you use?"
- When in doubt use a person's name or gender neutral pronouns, for example, "they/them/theirs".
- Please call people what they ask you to call them and use the pronouns that people ask you to use.
- Remind yourself that some people may be expressing gender differently than the last time you encountered them.
- When you make a mistake about someone's pronoun, make the correction and move on.

Showing up:

Please listen to transgender people's needs and stories when they are volunteered. Respect people's privacy and boundaries and do not ask questions that would wouldn't ask of anyone else.

Introduction

Thank you for joining us at the Wayne State University and Karmanos Cancer Institute 2024 Community-Engaged Research (CEnR) Summit!

Over the years, from 2018 to 2022, the CEnR Symposium has been a convening of collaboration, bringing together hundreds of community members, community-based organizations, as well as WSU faculty, staff, and students. It has served as a platform to showcase existing community-academic research partnerships, foster the creation of new collaborations, and engage in meaningful discussions about the opportunities and obstacles inherent in Community-Engaged Research (CEnR).

This year marks a significant evolution as we transition from the traditional Symposium format to the dynamic CEnR Summit. Embracing change, our focus for this year's Summit highlights the profound impact of income and employment on health equity. By delving into this theme, we aim to uncover actionable insights, innovative strategies, and collaborative approaches to address disparities and drive positive change.

We invite you to join us for this transformative journey at the CEnR Summit. Together, let's explore how we can leverage our collective knowledge, expertise, and resources to create a healthier, more equitable future for all.

More information on previous symposia can be found [here](#).

Community Engaged Research (CEnR)

Community-engaged research (CEnR) is a process in which academic researchers work collaboratively with and through community members to identify and address issues affecting the well-being of communities. CEnR has been endorsed and recommended by many but applied by relatively few. This one-day symposium will provide opportunities to learn about and discuss the benefits gained from CEnR, as well as its challenges and strategies for conducting this CEnR successfully. This meeting will also be an opportunity to learn from and network with community members who have identified research priorities for their communities. Topics that will be addressed will include the following:

- How does community engagement contribute to stronger science?
- What are successful models of community-engaged scholarship that academic researchers can follow?
- How can academic institutions support community-engaged scholarship among faculty?
- What are the health research priorities within local Detroit communities?
- What kinds of local opportunities are there for community-engaged research?

The Wayne State University (WSU) School of Medicine Center for Health Equity and Community Knowledge in Urban Populations (CHECK-UP)

CHECK-UP was established in 2021 with the support of the WSU Office of the Vice President of Research (OVPR) to provide an infrastructure to accelerate partnerships between metropolitan Detroit communities and WSU's schools, colleges, centers, and departments to identify, investigate, and act upon the barriers and bridges to health equity in the region. CHECK-UP is driven by the imperative that WSU prioritize and promote shared leadership with community stakeholders in medical and behavioral research methodologies that build engagement and participation are central to CHECK-UP because of their promise in reducing health disparities, increasing the public relevance of WSU's research, and expanding the reach of scientific discoveries throughout community at large. CHECK-UP leadership includes Hayley Thompson, Ph, Director, and Carrie Leach, PhD, Associate Director of Community Inclusion.

The Karmanos Cancer Institute (KCI) Office of Cancer Health Equity and Community Engagement (OCHECE)

OCHECE was established in 2017 with the overarching goal of connecting communities to KCI's science and KCI's science to communities. OCHECE coordinates community outreach and engagement activities across KCI's 46-county catchment area in Michigan, home to 6.7 million residents and is guided by a participatory research approach in which community stakeholders are actively engaged in research prioritization, implementation, and dissemination. Among OCHECE's many programs is Michigan Cancer HealthLink. Established in 2016, HealthLink is a network of Cancer Action Councils (CACs) organized as neighborhood-based and population-driven groups of cancer survivors, caregivers, and advocates who have been historically excluded from meaningful research collaborations. This infrastructure has provided a mechanism for community stakeholders to inform KCI's research agenda. Brittany Dowe, MPH, serves as OCHECE's Director and Hayley Thompson, PhD, serves as faculty supervisor.

Day 1 Agenda

**Wayne State University & Karmanos Cancer Institute
Fifth Annual Community-Engaged Research (CEnR) Summit:
“Building Career Momentum & Income Stability to Achieve Health Equity”**

**Day 1: A Career as a Community Health Worker: Starting Out & Staying In
THURSDAY, APRIL 11**

6:00 PM **Virtual Networking**

6:30 PM **Welcome**
Hayley S. Thompson, PhD

6:35 PM **Panelist Introductions**
Arthur Hampton, MEd

6:40 PM **Panel Discussion**

Philesha Gough, MS
Ijeoma Nnodim Opara, MD
Cheryl Somers, PhD
Hayley S. Thompson, PhD

7:40 PM **Question & Answer**

7:55 PM **Wrap-up & Evaluation**

8:00 PM **End**

Day 2 Agenda

**Wayne State University & Karmanos Cancer Institute
Fifth Annual Community-Engaged Research (CEnR) Summit:**

**Day 2: Building Career Momentum & Income Stability to Achieve Health Equity
FRIDAY, APRIL 12**

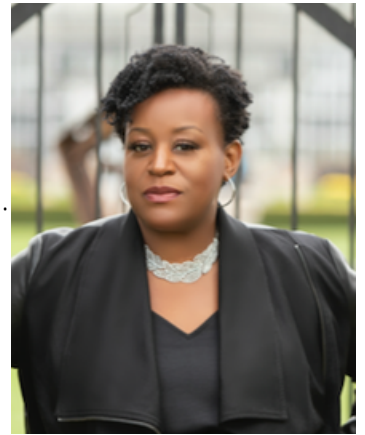
- 9:00 AM Virtual Networking**
- 9:30 AM Welcome & Opening Remarks**
President Kimberly Andrews Espy, PhD
School of Medicine Dean Wael Sakr, MD
Planning Committee Chair, Maha Albdour, PhD, RN, APHN-BC
- 9:45 AM CHECK-UP Update & Research Network Update**
Hayley S. Thompson, PhD
Maha Albdour, PhD, RN
Rick S. Zimmerman, PhD
- 10:15 AM Keynote Speaker**
Kenyetta Dotson, DMIN, MSW
Rx Kids Flint: A Cash Payment Program for New & Expecting Moms
- 11:00 AM Panel Discussion: Building Bridges, Sharing Solutions: Community-Academic Partnerships for Equity**
Shannon Lijewski, MCHW, MBA, CHCEF
Danielle Atkinson
David Underwood
Theresa Hastert, PhD, MPP
Samuele Zilioli, PhD

Moderator: Ki-Jana Malone
- 12:00 PM BREAK**
- 12:30 PM Breakout Session & Agenda Setting**
- 1:15 PM Report Back to Entire Group**
- 1:45 PM Wrap-up & Evaluation**
- 2:00 PM End**

Speakers, Panelists, & Moderators

Danielle Atkinson

Danielle Atkinson has extensive experience as a church-based, electoral, and community organizer. She has worked with organizations such as America Votes, State Voices, Population Connection and ACORN. In 2012, Atkinson founded Mothering Justice, a leadership development and advocacy organization. Atkinson has led organizing efforts to raise the minimum wage in both Florida and Michigan. Mothering Justice also led the fight to get earned paid sick time in Michigan. Her work organizing mothers won her the 2013 Michigan Organizer of the Year Award. Atkinson received bachelor's degrees in political science and sociology from Pfeiffer University and lives in Royal Oak, Michigan, with her husband Frank and their six children.



Kenyetta Dotson, DMIN, MSW

Kenyetta Dotson, DMIN, MSW, is the Director of Community-based Implementation and Engagement for Michigan State University, College of Human Medicine, Charles Stewart Mott Department of Public Health. Kenyetta is a lifelong resident of Flint, MI, and she is deeply rooted as a community organizer, veteran, and woman of faith. She encourages positive systemic change throughout the City of Flint, Genesee County, and extends her assets of time, talents, treasures, and gifts to serve our smallest and most vulnerable citizens. Dotson has over 30 years of community development experience, advocating for youth, families, and those susceptible to the culture of violence. These skills and qualities were developed in her pursuit of higher education, which began at Mott Community College, reinforced at the University of Michigan – Flint, and further strengthened through completing a Master of Social Work Degree from Michigan State University and a doctoral degree in Black Church and African American Studies at Ashland University. She is the Co-Chair of the Community Advisory Board for the Flint Registry, leads the Pediatric Public Health Youth Advisory Council, is an active Nationwide and local Violence Prevention Network member, and serves on many other non-profit and community boards. Dotson has been highly effective and successful in building healthy working relationships and establishing a strong foundation of trust. This trust embraces new and existing community partners throughout Flint, Genesee County, and the State of Michigan. This vast network of organizations, entrepreneurs, decision-makers, and community leaders helps establish effective outreach and engagement strategies that have proven effective and impactful. Substantially increasing the presence and relationships of the Registry and the Public Health Initiative in the community and among Flint residents and their families, to name a few. When Dotson is not fearlessly working on improving the quality of life for others, she enjoys traveling, spending time with friends and family, attending church, and watching movies outdoors. She embraces her downtime to recharge and refocus to remain the voice of change. Her quotes are, “Change Begins With Me, Get Involved and Make a Difference.” She stands by the idea that “Everybody is somebody.”



Speakers, Panelists, & Moderators

Philesha Gough, MS

which began at Mott Community College, reinforced at the University of Michigan – Flint, and further strengthened through completing a Master of Social Work Degree from Michigan State University and a doctoral degree in Black Church and African American Studies at Ashland University. She is the Co-Chair of the Community Advisory Board for the Flint Registry, leads the Pediatric Public Health Youth Advisory Council, is an active Nationwide and local Violence Prevention Network member, and serves on many other non-profit and community boards. Dotson has been highly effective and successful in building healthy working relationships and establishing a strong foundation of trust. This trust embraces new and existing community partners throughout Flint, Genesee County, and the



State of Michigan. This vast network of organizations, entrepreneurs, decision-makers, and community leaders helps establish effective outreach and engagement strategies that have proven effective and impactful. Substantially increasing the presence and relationships of the Registry and the Public Health Initiative in the community and among Flint residents and their families, to name a few. When Dotson is not fearlessly working on improving the quality of life for others, she enjoys traveling, spending time with friends and family, attending church, and watching movies outdoors. She embraces her downtime to recharge and refocus to remain the voice of change. Her quotes are, “Change Begins With Me, Get Involved and Make a Difference.” She stands by the idea that “Everybody is somebody.”

Theresa Hastert, PhD, MPP

Theresa Hastert, PhD, MPP, is an Associate Professor in the Department of Oncology at the Wayne State University School of Medicine and the Population Studies and Disparities Research Program of the Karmanos Cancer Institute. Her research focuses on social, economic, and behavioral factors as predictors of cancer outcomes and in racial and socioeconomic health disparities. Her recent work focuses on cancer survivorship, financial and employment outcomes after cancer, and their impact on health-related quality of life for people with cancer and their caregivers using quantitative and qualitative methods.



Speakers, Panelists, & Moderators

Shannon Lijewski, MCHW, MBA, CHCEF

Shannon Lijewski, MCHW, MBA, CHCEF, is a Michigan native who loves spending time with her family outdoors in Northern Michigan. She has spent the past 22 years serving the most vulnerable community members through outreach, education, health policy and advocacy. Passionate about community impact, Shannon is a strong advocate in supporting the expansion of Community Health Workers, assisting those who are experiencing homelessness and helping to eliminate food insecurity. She is the creator of the “I AM A CHW” campaign, Founder of the Rural CHW Network and Principal at Everyday Life Consulting whose team brings vast experience that focuses on building individual, organization and



Ki-Jana Malone, BS

Ki-Jana Malone, BS, is the Community Strategist for Aetna Medicaid Community CARES Team. Ki-Jana is a native Metro-Detroiter, who graduated from Wayne State University in May 2019 as an NIH-ReBUILDetroit Scholar with a BS in Public Health and a minor in Health Psychology. A passionate and motivated public health professional with a background in STI/HIV prevention and education, she educated hundreds of Detroit community members on their health options at the Detroit Public Health STD Clinic. Ki-Jana is now continuing to serve the Metro-Detroit area as a Community Strategist for Aetna, Medicaid. In this role, she continues to contribute her knowledge and expertise in community engagement within a local community-oriented team focused on social determinants of health and health equity.



Speakers, Panelists, & Moderators

Ijeoma Nnodim Opara, MD

Ijeoma Nnodim Opara, MD, received her medical degree from Wayne State University School of Medicine (WSUSOM) and is a graduate of Detroit Medical Center (DMC)/WSUSOM Internal Medicine-Pediatrics combined residency program, after which she served as Chief Medical Resident. Currently, she is a double-board certified Assistant Professor of Internal Medicine and Pediatrics at WSUSOM, Associate Program Director of the Internal Medicine-Pediatrics residency, and attending physician with Wayne State University Physician Group. She is the founding director of an innovative initiative and curriculum “Health Equity and Justice in Medicine” for internal medicine, internal medicine-pediatrics, and pediatrics residents which combines critical reflection, community



engagement, scholarship, and advocacy to address social and structural determinants of health and health disparities. She is Chair of the SEMCME committee on social determinants of health education and the Detroit Medical Center Graduate Medical Education Center for Quality Improvement, social determinant of health section. She is also co-founding director of Wayne State University Global Health Alliance, a multidisciplinary organization created to unify university and regional global health practitioners and create a collaborative community of best practice in global and urban health. She co-created and co-directs the Global Urban Health & Equity curriculum (GLUE), an innovative interprofessional comprehensive certificate and competency-based global health curriculum. She provides clinical care to a chiefly underserved population, supervises resident clinics, and teaches inpatient and ambulatory medicine. Certified in Clinical Teaching by the Stanford Clinical Teaching Program and an inaugural fellow of the Academic Leadership Academy of Wayne State University, she is passionate about medical education, mentoring a number of residents and medical students in wellness, work-life integration, academic, and career development. Her areas of academic interests are in health equity, justice, social and structural determinants of health, global health, and interprofessional education. A lead investigator in multiple interdisciplinary multi-center local and international research projects, she focuses on understanding how resilience can be leveraged as an asset to improve community health outcomes and convergence implementation science in effective professional development in structural and social determinants of health, health equity, and social justice of health professional trainees. A certified facilitator in cultural competency (cultural humility and microaggressions) and certified in Global Leadership by the American College of Academic International Medicine, she imbues every endeavor with her philosophy of ethical, culturally humble, patient-centered, evidence-based, high value, compassionate care and prioritizes attention to social determinants of health, disparities, and equity as part of a comprehensive approach to patients.

Speakers, Panelists, & Moderators

Cheryl Somers, PhD

Cheryl Somers, PhD, is a Professor at Wayne State University. She started at WSU in 1998 and was at Eastern Illinois University for 2 years before that. Her academic and clinical expertise is in school psychology and counseling psychology and she has trained school and counseling psychologists her whole career, advising extensively at both the master's and doctoral levels. Her research and community outreach work is conducted within the Center for Health and Community Impact (CHCI), also at Wayne State. Her research has long been collaborative and interdisciplinary, focused on contextual (e.g., family, peer, school, media, other) predictors of social and emotional development, academic achievement, and physical and sexual health, including interventions for reducing or avoiding unhealthy risk behaviors and improving health and wellness outcomes, with an emphasis on vulnerable youth, including those of low income and economic marginalization (LIEM) backgrounds. Health and wellness equity is of central focus, as is understanding social and structural determinants of health and wellness inequities. Dr. Somers has a strong emphasis on collaborative and interdisciplinary research with others, through which varying lenses and vantage points contribute to rich perspectives on human developmental research. Her studies primarily involve basic inferential research as well as evaluation of interventions, with some qualitative methodologies employed as well. Her newest research direction involves training of Community Health Workers (CHWs) as a mechanism for service delivery in the physical, medical, social, and mental health and wellness domains, and examining efficacy of training and practice of CHWs in partnership with a large interdisciplinary team of research scholars and community agencies. This work is focused on understanding and targeting the complex social determinants of health in underserved and marginalized communities. Dr. Somers is also heavily involved in state and national service. At the state level, she is part of the Michigan Association of School Psychologists (MASP) Board as the Professional Standards Chair, and is also involved in many initiatives taken on by the Board. At the national level, she is a long time program reviewer for the National Association of School Psychologists (NASP) Program Approval Board.



Speakers, Panelists, & Moderators

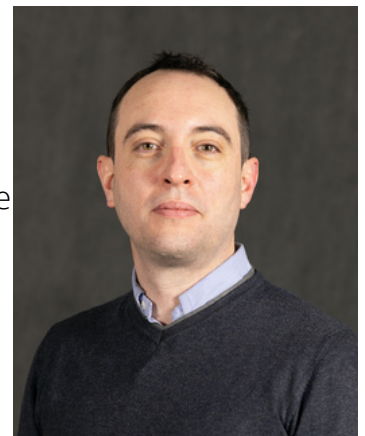
David Underwood

David Underwood is a retired sales and marketing executive, with 23 years' experience serving diverse communities and major business customers. He is a change agent who builds strategic collaborations among stakeholders in government, education, non-profits, foundations, healthcare, private and public institutions, and others. Today, he leads Detroit Community Care Network (DCCN), a faith-based organization that serves those in need in our community connecting them to programs, services, resources, and information that has a positive impact in their lives. Utilizing 'Transition to Success,' a standard of care, as its foundation, DCCN deals directly with the Social Determinants of Health of those served. DCCN is the community engagement partner in the Wayne State University/Wayne Health LEAP-HTN project. David is a committee member for the RESTORE Community Engagement Council. He serves on the Advisory Board of Matrix Human Services after 13 years as a Matrix board member. He also serves as President of Tri-Unity Community Development Corporation, the non-profit community development arm of Third New Hope Baptist Church. David is a past recipient of Michigan Chronicle's 2009 "Men of Excellence Award". This award is given to local African American men who inspire others through vision and leadership, exceptional achievements, and participation in community service. A husband, father of four (4), David enjoys golf and dancing in his spare time.



Samuele Zilioli, PhD

Samuele Zilioli, PhD, is an associate professor in the Department of Psychology and the Department of Family Medicine and Public Health Sciences at Wayne State University (WSU), Detroit. Before landing in the US, Dr. Zilioli completed his undergraduate and graduate training in Italy and Canada. In Italy, he received a B.A. and M.A. in Psychology from Catholic University of Sacred Heart. In Canada, he completed a Ph.D. in Cognitive and Neural Sciences from Simon Fraser University where he was the recipient of the Governor General's Gold Medal for achieving the highest academic standing upon graduation. He completed a postdoc in health psychology at Wayne State University. Dr. Zilioli's program of research focuses on the relationships between psychosocial stressors related to socioeconomic status (SES) and race/ethnicity, psychosocial resources, and glucocorticoid-related mechanisms, and the extent to which these biopsychological mechanisms serve as pathways through which stress affects other biological systems (e.g., immune, cardiovascular, and metabolic system) and physical health across the lifespan. His research has been funded by the National Institute of Justice (NIJ) and is currently funded by the National Institute of Health (NIH). Dr. Zilioli's work has appeared in *Psychological Science*, *Clinical Psychological Science*, *Psychoneuroendocrinology*, *Brain Behavior and Immunity*, *The Journals of Gerontology Series A*, *Neuroscience & Biobehavioral Reviews*, *Frontiers in Neuroendocrinology*, *Psychosomatic Medicine*, and *Health Psychology*. His academic achievements earned, among others, the WC Young Recent Graduate Award from the Society for Behavioral Neuroendocrinology, the Excellence in Health Psychology Research by an Early Career Professional Award from Division 38 (Health Psychology) of the American Psychological Association, and the Neal E. Miller New Investigator Award. Academy of Behavioral Medicine Research.



Maha Albdour, PhD, RN, Symposium Co-Chair

Maha Albdour is a board-certified advanced public health nurse who earned her Ph.D. in Nursing at Wayne State University in 2017. Her research interest is the health of minority and immigrant adolescents and young adults. She conducted several projects among the Arab American community exploring psychosocial stressors such as childhood adversities (including war, armed conflicts, and community violence experiences), discrimination, acculturative stress, social support, and parent-child relationship influence on physical and mental health of adolescents and young adults. Dr. Albdour has recently concluded a study that examined the effect of past and current multiple stressors and their effects on the Endocrine system (cortisol levels) and health, both mental and physical, of immigrant young adults from Arabic decent. Currently, Dr. Albdour received funding for her study “depression and Metabolic Syndrome (MetS) in Arab-American parent-adolescent dyads”, which will examine the interaction between parental and adolescent psycho-social stressors and their effects on mental health and cardiovascular disease risk among both parents and their children. The study was funded by WSU-ACCESS initiatives for pilot data supporting community-engaged research, and data collection are in progress. In addition, Dr. Albdour is currently the principal investigator for two studies focusing on prediabetes stress intervention and medical mistrust among ethnic minority young adults. Dr. Albdour has received the Midwest Nursing Society (MNRS) Adolescents Health Research Interest Group new investigator award as an acknowledgment of her work with minority adolescents.



Benji Raap, MPA, Symposium Co-Chair

Benji Raap has a master’s degree in public administration. He has 11 years of public health experience and worked 3 years as a community health worker, 7 years as a HIV Medical Case Manager and just started his second year with the Cancer Prevention and Control Section of the Michigan Department of Health and Human Services. Benji is the Cancer Screening Project Navigator. This project aims to help people living with HIV get screened for colorectal, cervical, breast and lung cancer in Michigan.



Planning Committee

Arthur Hampton, MEd

Arthur is an experienced diversity, equity, and inclusion professional beginning in higher education. Leading to his social impact work with the Stand Together Foundation and the Social Determinants of Health Institute. Arthur serves as the Director of Health Equity at the Southeastern Michigan Health Association to help lead collective impact projects through exploring activities that reduce health inequities and exploring strategic partnerships to increase visibility of and locate resources for vulnerable populations. Arthur is passionate about bringing resources to those in need and building relationships that catalyze change and community transformation.



Chamika Phillips, MS

Chamika Phillips is the Director of Diversity, Equity & Inclusion at Detroit Wayne Integrated Health Network (DWIHN) with over 12 years' experience helping community members throughout Michigan. Specializing in Human Resources and DEI, Chamika uses that experience to work collaboratively to develop and implement strategies and initiatives that advance diversity and inclusivity. Chamika's goal is to help create inclusive and equitable environments as we help the communities we serve. Chamika is a member Delta Sigma Theta Sorority, Inc., an avid reader and loves spending time with her family and friends.



Chandra McMillion

Chandra McMillion is the CEO and founder of the McMillion Group. The McMillion Group is a full-service strategy consulting, project leadership and implementation support firm specializing in organizational development, leadership and board development, community change and social justice. The Detroit 21 is one of our key clients and we are representing the interests of this collaborative of Executive Directors from community development organizations from across Detroit.



Planning Committee

Jerron Totten

Jerron Totten, 33, is a native of Reidsville, NC. A graduate of James Benson Dudley High School and North Carolina Agricultural and Technical State University, Totten currently resides in Detroit, Michigan. Professionally, he has spent over 7 years in political organizing having served on both the Obama and Hillary Clinton presidential campaigns. Currently, he is the Social Justice Engineer at LGBT Detroit, North America's largest African American found and led LGBT non-profit organization. Here Jerron leads five programs including the organization's largest fundraising event, Hotter Than July. Jerron recently received an appointment to Michigan Governor Gretchen Whitmer's LGBT Leadership Council, elected as Precinct Delegate for Detroit's Precinct 201 and serves as Vice-Chair of the Michigan Democratic Party's Grassroots Caucus.



Lisa Braddix, MPH

Lisa M. Braddix is the Chief Health Equity Officer for the Southeastern Michigan Health Association where she works to foster organizational collaboration to improve community health using practical approaches that will eliminate health disparities in marginalized populations throughout southeast Michigan. Lisa has spent several years working in community health and is passionate about issues related to health disparities and health equity. Lisa also serves as the Steering Committee Chair for the newly established Center for Health Equity and Community Knowledge in Urban Populations at Wayne State University. She also is the co-chair of the Michigan Cancer Consortium Health Equity and Policy Committee and the Healthy Pontiac We Can! Coalition. Lisa is a health enthusiast and a Certified Group Fitness Instructor through the Athletics and Fitness Association of America (AFAA). She is the Founder and CEO of Glow Up Fitness, LLC, a newly created fitness company empowering women and girls to adopt fitness as a life skill and as a cultural norm to practice through all stages of life and to pass down through generations. Lisa is a native of Cleveland, Ohio and a graduate of The Ohio State University with a Bachelor of Science Degree in Biological Sciences and has a Master of Public Health Degree from the University of Michigan. She has also earned a graduate certificate in Non-Profit Management from Eastern Michigan University and is currently a doctoral student at Wayne State University studying the Sociology of Health and Illness. Lisa is also a proud member of Alpha Kappa Alpha Sorority, Incorporated, the oldest service organization founded by college-educated, African American women.



Planning Committee

Megan Landry

Megan Landry began her career at the American Cancer Society 2014 and currently serves as the Associate Director of Cancer Center Partnerships. In her role, Megan works with health system accounts across the states of Michigan and Indiana on cancer screening and prevention strategies, providing support for cancer patients, and supporting American Cancer Society funded Researchers. Megan brings with her the perspective of a cancer caregiver, experience leading fundraising events, and a passion for advocacy. Megan co-leads the Michigan Cancer Prevention Taskforce, made up of representatives from 34 health-based organizations across Michigan. Megan also serves on the Board of Directors for the Michigan Cancer Consortium and on the Advisory Board for the Karmanos Cancer Institute Office of Cancer Health Equity and Community Engagement.



Patrick Yankee

Patrick Yankee (He/Him) is the Chief Development Officer at Corktown Health. He has over 30 years of experience with managing state and federally funded programs for persons living with HIV. Patrick has held key positions as a consultant to the Michigan Department and Health and Human Services and the City of Detroit.



Lisa Rutledge

Lisa Rutledge is a long-time community health improvement professional and active volunteer with over 40 years of experience. A graduate of Michigan State University, Lisa has experience starting in specialty gynecology practices in patient care/health education and clinical research in the area of HPV. Next at Oakwood Healthcare, she oversaw programs for immunizations, school-based health, child passenger safety, domestic violence awareness, arts in health care, fitness and wellness services, access to care and other community benefit programs. Since 2012, she has been the Special Projects Manager at Western Wayne Family Health Centers, a community health center organization. There she works with community partners to create collaborations to improve the health and wellbeing of people in the area as well as doing public relations, grassroots advocacy, outreach, and other activities to help the health centers thrive. She is also an active community volunteer, serving on boards and committees for agencies such as The Information Center, Camp Fire Southeast Michigan, Everybody Ready, Personalized Nursing LightHouse. Western Wayne Cancer Action Council and others. Her specialty is bringing together people and organizations to maximize results and making connections.



Angulique Outlaw, PhD

Dr. Angulique Y. Outlaw is the Associate Dean for Postdoctoral Affairs at the Wayne State University (WSU) Graduate School. Additionally, she is an Associate Professor (Research) in the Department of Family Medicine and Public Health Sciences, Division of Behavioral Health, at the WSU Medical School. Dr. Outlaw is a pediatric psychologist with significant expertise in designing, implementing, and evaluating interventions for high-risk youth utilizing community-based participatory research (CBPR) practices. She has extensive CBPR expertise and experience with at-risk and youth living with HIV, authoring a book chapter about community-based intervention research with sexual and gender minority young men. Dr. Outlaw also has experience with multi-site evaluation studies via NIH-funded clinical trials, the for Disease Control and Prevention, and HRSA Special Projects of National Significance. She was also the lead for the National Youth Community Advisory Board (NYCAB) for the Adolescent Medicine Trials Network for HIV/AIDS Interventions (ATN), as well as the lead for Community Engagement and Site PI for the NIH site grant to Florida State University for the ATN. Dr. Outlaw was the evaluator for a comprehensive service provision project for sexual minority men at risk for and living with HIV to improve the coordination of service providers, services, and trainers and technical assistance providers to ensure culturally, developmentally, and linguistically competent service provision. Finally, she is the director of a grant-funded, comprehensive continuum of prevention care program for at-risk adolescents and young adults and has several locally funded projects focusing on HIV prevention (testing, PrEP education, referral and linkage); group-level, skills building HIV prevention programming (primary and secondary prevention); and health promotion for adolescents and young adults living with HIV (tobacco reduction and/or cessation).



Arash Javanbakht, MD

Arash Javanbakht, MD, is a psychiatrist and serves as the director of the Stress, Trauma, and Anxiety Research Clinic (STARC). He is nationally known for his clinical and research work on anxiety, trauma, and PTSD. He is heavily involved in treatment of civilians, refugees, and first responders with PTSD. Dr Javanbakht's research examines the impact of exposure to war trauma in adults and children Syrian and Iraqi refugees, and biological and psychological factors of risk and resilience. This work is funded by an NICHD R01 award. STARC also uses art, dance and movement, and yoga and mindfulness in helping refugee families overcome stress. Dr Javanbakht work in treatment and research of trauma among first responders is funded by the State of Michigan. STARC is also a national leader in utilization of augmented reality and telemedicine technologies for treatment for anxiety disorders and PTSD. Dr Javanbakht's work has been featured on the CNN, National Geographic, Aljazeera, NPR, Scientific American, Washington Post, Smithsonian, PBS, Science, Lancet, American Psychiatric Association Press Briefing, Anxiety and Depression Association of America, American Academy of Child and Adolescent Psychiatry, and tens of other media outlets. He is the author of "Afraid: Understanding the Purpose of Fear, and Harnessing the Power of Anxiety".



Planning Committee

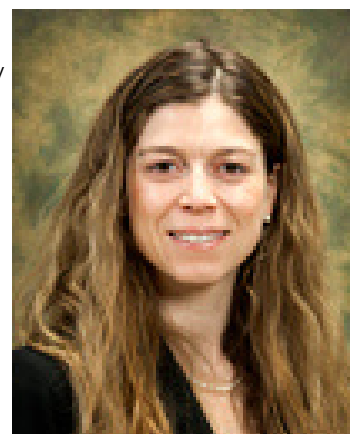
Asfar Azmi, PhD

Dr. Asfar Azmi is an Associate Professor of Oncology at Wayne State University School of Medicine. He is the Leader of Molecular Therapeutics Research Program as well as the Director of Pancreas Cancer Research at the NCI designated Comprehensive Cancer Center Karmanos Cancer Institute in Detroit Michigan. He has a record of accomplishment in the area of drug discovery research. Dr. Azmi has made significant contributions on pre-clinical and early phase development of new drugs for pancreatic cancer particularly, nuclear export inhibitor selinexor and KRAS pathway targeted therapies. Work done by his team led to the FDA approval of selinexor in several tumor indications. Dr. Azmi has published more than 170 peer reviewed articles in prestigious journals such as Gastroenterology, Oncogene, Clinical Cancer Research, Journal of Biological Chemistry, Molecular Cancer Therapeutics, Nature Reviews Clinical Oncology and Seminars in Cancer Biology. He is the editor of several books on drug discovery topics. Dr. Azmi is the recipient of NIH MERIT award, and young investigator awards from American Pancreatic Association and American Association for Cancer Research (AACR). He is the recipient of Academy of Scholars Award from Wayne State University, Kales Endowed Faculty Award and Heroes of Cancer Award from Karmanos Cancer Institute. His lab is continuously funded by NIH and pharma industry.



Elizabeth Towner, PhD

Dr. Towner is an Assistant Professor in the Department of Family Medicine & Public Health Sciences within the Division of Behavioral Sciences at Wayne State University School of Medicine. I am also a member of the Steering Committee for the Center for Health Equity and Community Knowledge in Urban Populations, Co-Associate Director for the NIH-funded ACHIEVE GreatER Center Community Engagement Core, Research Director for the MetroNet Practice-Based Research Network, and a faculty member within the Office of Community Engaged Research at Wayne State University. Her research broadly focuses on health equity, developing health behavioral interventions, and pediatric obesity. She has over a decade of experience applying community engaged and community-based participatory research in these areas. Dr. Towner has partnered with several community organizations, community members, and primary care clinics to build infrastructure and capacity for community engaged and patient-centered outcomes research in the areas of pediatric obesity, cardiovascular health equity, COVID-19, and Long COVID in Detroit. This work has included facilitating community action councils, adapting and implementing a research capacity building curriculum for community members, engaging action councils in identifying and ranking research priorities, developing community-focused research agendas, and engaging action councils in developing, implementing, and evaluating health campaigns that focus on their health priorities. She has obtained several extramural grants and contracts to support this work. Finally, Dr. Towner teaches a course in the Master's of Public Health program at Wayne State University on Public Health Community Level Intervention Science.



Planning Committee

Jason Carbone, PhD, MSW

Jason T. Carbone, PhD, MSW is an Assistant Professor of Social Work at Wayne State University. He serves as the Director of the joint MSW/MPH program and chair of the Innovation in Community, Policy, and Leadership concentration in the MSW program. His research focuses on social and behavioral determinants of health through the lens of perceived community experiences and environmental stressors. Dr. Carbone's research applies allostatic load theory to better understand the ways in which community stressors lead to negative mental health outcomes. He utilizes a range of advanced statistical methods—such as latent variable models, causal inference techniques, and time-to-event analyses—to better explication these relationships. His work is informed by nearly a decade of community practice experience at the neighborhood-level. His research is particularly oriented to understanding how social location factors impact mental health outcomes from both an individual stress process model perspective as well as within the context of population-level health.



Lauren Hamel, PhD

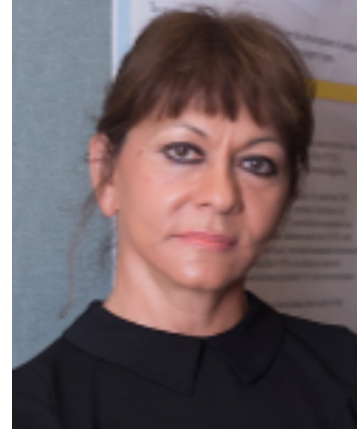
Lauren M. Hamel, PhD is Associate Professor of Oncology and Co-Program Leader of the Population Studies and Disparities Research Program at the Karmanos Cancer Institute and the Wayne State University School of Medicine in Detroit, Michigan. She is also the faculty director of KCI's Medical Interaction Research Archive and Vice Chair of Diversity, Equity and Inclusion for the Department of Oncology. Dr. Hamel is an expert in patient-physician communication, cancer treatment disparities, and in building and testing interventions to improve patient-physician communication. She is PI of two recently completed NIH-funded studies assessing nonverbal communication that occurs between black patients with cancer and their oncologists during clinical interactions. Using video-recording naturally-occurring cancer treatment discussions, she is investigating aspects of nonverbal communication as potential markers of racial attitudes (e.g., physician implicit bias, patient suspicion of medical care) and predictors of interaction outcomes. Currently, Dr. Hamel is PI of an American Cancer Society Research Scholar Health Equity Grant test the effectiveness of a patient-focused intervention on patient-clinician treatment cost discussions and other patient financial toxicity-related outcomes. She has 50+ publications including articles in peer-reviewed scientific journals including Cancer, the Journal of Clinical Oncology, JCO Oncology Practice, and Cancer Control.



Planning Committee

Linda Jaber, PharmD

Dr. Linda Jaber is a Professor of Pharmacy Practice at Wayne State University Eugene Applebaum College of Pharmacy and Health Sciences. She obtained her Pharm.D. from Wayne State University. Dr. Jaber is a national expert in diabetes treatment. Her studies of the epidemiology and risk factors of diabetes, prediabetes, and the metabolic syndrome among Arab Americans provide the first representative, population-based, cross-sectional estimates of these conditions in this ethnic group. Her research has also focused on determining the responses of patients with diabetes to chronic hypoglycemic agents, exploring the racial differences in sensitivity and specificity of glycated hemoglobin in identifying diabetes and pre-diabetes, and on diabetes prevention in the Arab American community.



Rhonda Dailey, MD

Rhonda Dailey, M.D., is an Assistant Professor of Research in the Department of Family Medicine and Public Health Sciences (DFMPPHS) in the School of Medicine. Formally trained in medicine, Dr. Dailey has over 20 years of experience in behavioral and health-disparities research with expertise in the recruitment and retention of minority populations in clinical settings and in the engagement of medical professionals and community stakeholders in research. Her research work includes projects focused on implicit bias awareness and training, community engaged research, perinatal health, health equity and disparities related to systemic racism and chronic disease, patient attitudes and beliefs about health, and healthcare quality.



Planning Committee

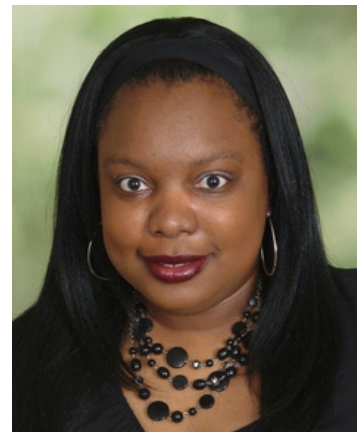
Rick S. Zimmerman, PhD

Rick Zimmerman is currently a Professor the Wayne State University College of Nursing in Detroit. He is a prevention scientist who received his PhD in medical sociology from the University of Wisconsin-Madison. His research has focused on models of behavior change; HIV, STD, and teen pregnancy prevention; and understanding and improving the validity of self-reports of sensitive behaviors. He recently completed an NIH project developing and evaluating a micro-economic intervention to reduce HIV and violence in transgender women and is working with colleagues on a project to develop a health communication campaign for Black men who have sex with men on a potential future HIV vaccine.



Rodlescia Sneed, PhD

Dr. Sneed is a social gerontologist interested in how the social environment impacts adult development and aging in diverse populations. She has expertise in biopsychosocial models of health, community-engaged research, and chronic disease. Her work engages community and institutional stakeholders to identify and improve upon factors that contribute to inequities in health and well-being among mid and late-life adults.



Stacie Clayton, MBA

Stacie Clayton, MBA, a native Detroit and two-time alumna of Wayne State University, joined the Wayne State University Government and Community Affairs team as Director of Community Affairs in May 2021. In this position, Stacie promotes the urban mission of the University by working with internal and external stakeholders. This includes strategically extending University resources to the community so that Wayne State continues to have a significant impact on the cultural, economic and social life of southeastern Michigan.



Hayley Thompson, PhD

Hayley S. Thompson, PhD, is a professor in the Department of Oncology at Wayne State University and the Associate Center Director for Community Outreach and Engagement at the Karmanos Cancer Institute (KCI), an NCI-designated comprehensive cancer center. In this role, she established KCI's Office of Cancer Health Equity and Community Engagement (OCHECE) and serves as its faculty supervisor. She is also founding director of the emerging Wayne State University Center for Health Equity and Community Knowledge in Urban Populations (CHECK-UP). She is a clinical psychologist whose research addresses racial and ethnic disparities in cancer care and outcomes. Her primary focus is community-based intervention research, including investigations of cancer survivorship. She has received funding from the National Cancer Institute, the American Cancer Society, the National Heart, Lung, and Blood Institute, the Agency for Healthcare Research and Quality, the Patient-Centered Outcomes and Research Institute, and other agencies and foundations. She is currently a co-principal investigator on the NCI-funded African American Resilience in Surviving Cancer (ARISE) Study. Her research also addresses sociocultural assessment in diverse populations. She led the development of the Group-Based Medical Mistrust Scale (GBMMS), widely used in health disparities research, administered in over 100 published, peer-reviewed studies. She currently directs Michigan Cancer HealthLink, a community-academic partnership to build research capacity in diverse communities within Karmanos Cancer Institute's 46-county catchment area with 150 community members involved in contributing to Karmanos' research agenda. She is also Director of the Community Health Scholars Program within CHECK-UP, designed to support metro Detroit residents in building and applying research skills.



Carrie Leach, PhD, MPA

Carrie Leach is an Assistant Professor of Research at the Institute of Gerontology, Community Engagement Program Manager at the Center for Urban Responses to Environmental Stressors (CURES), and Associate Director for Community Inclusion at the Center for Health Equity and Community Knowledge in Urban Populations (CHECK-UP) at WSU. Dr. Leach has expertise in health communication, participatory and action research, digital and health literacy, and community-based and aging services delivery and communication. Her research, expertise, and driving passion are focused on improving communication inequities, decision making and public health by developing community-driven solutions derived from participatory processes. Her work at the IOG has focused on partnering with organizational leaders and community residents to evaluate and examine the needs of more than 5,500 older adults across Michigan to translate findings into actionable improvements in aging and community-based services practice and policy. At CURES she works with community stakeholders and researchers to co-construct multi-media materials aimed at improving environmental health literacy in Detroit. Those efforts resulted in disseminating health-protecting information to more than 5,000 Detroiters through face-to-face interactions and thousands more on-line. Her overarching aim is to foster University in-reach, so that the science community and expertise can be leveraged to the benefit of the public, and likewise, so researchers can learn through community engaged experiences and be better allies through their work.



Alex Sass, MSW

Alex Sass is the manager of research and operations for CHECK-UP. In this position she supports the CEnR Symposium Planning Committees, CHECK-UP Research Networks, as well as the administrative side of CHECK-UP. Additionally, Alex works as a research assistant at Karmanos Cancer Institute, Office of Cancer Health Equity and Community Engagement (OCHECE) supporting the work of the Genesee County Cancer Action Council. While receiving her Master's of Social Work at the University of Michigan, her training focused on community-engaged research and health disparities. Alex also works as a research assistant under the NIA funded "Recruiting and Retaining Older African Americans into Research" funding the Healthier Black Elders of Flint program.



Ten-Niah Kinney, MPH

Ten-Niah Kinney, M.P.H., is the Manager of Capacity Building and Training at the Center for Health Equity and Community Knowledge in Urban Populations (CHECK-UP) at Wayne State University. She received her bachelor's degree from Michigan State University in Human Biology and recently received her Master of Public Health degree from Wayne State University School of Medicine. At WSU, Ten-Niah has worked on several research projects targeting community assessment, developing engagement programming, and methods to improve health outcomes in vulnerable populations. Within her role at CHECK-UP, Ten-Niah manages multiple projects including supporting the Detroit Community Health Equity Alliance, and the Community Health Scholars Program. Previously, Ten-Niah worked in collaboration with CVS Health, as a COVID immunizer and healthcare ambassador where she partnered on pharmacy community campaigns that addressed barriers to medication adherence and care accessibility.



Afsana Rinky, BS

Afsana Rinky, B.S., is a Research Assistant for CHECK-UP where she supports the Faith Community Research Network, data management, and CHECK-UP events. Afsana is also a Research Assistant with the Office of Cancer Health Equity and Community Engagement (OCHECE) at Karmanos Cancer Institute. Afsana received her Bachelor of Science in Public Health with a minor in Gender, Sexuality, and Women's studies from Wayne State University and is currently working towards a Master of Public Health degree with a focus on public health strategies and practices at WSU. Afsana also volunteers with Hope Village Revitalization. With this organization, she helps residents strategize and implement pathways to increasing nutritious food intake and better physical health.





WAYNE STATE CHECK-UP Center for Health Equity and Community Knowledge in Urban Populations

www.check-up.wayne.edu

Hayley Thompson, PhD
Director
hayley.thompson@wayne.edu

Carrie Leach, PhD, MPA
Associate Director for Community Inclusion
carrieleach@wayne.edu

Alex Sass, MSW
Manager, Research & Operations
alexandra.sass@wayne.edu

Ten-Niah Kinney, MPH
Manager, Training & Capacity Building
ten-niah.kinney@wayne.edu



**OFFICE OF CANCER HEALTH EQUITY
& COMMUNITY ENGAGEMENT**

www.karmanos.org/karmanos/office-of-community

Brittany Dowe, MPH
Director
doweb@karmanos.org