



2023 CHECK-UP Community-Engaged Research Workshop Series

*Processes and Practices for Cultivating Meaningful
Community-Academic Partnerships: From Concept to
Action*

Hybrid Event:

Zoom

or

In-person at Fellowship Chapel, 7707 Outer
Drive, Detroit, MI 48235

April 27, 2023

6:00 - 8:00 PM

Land Acknowledgment & The Legacy of Native Peoples

Wayne State University rests on Waawiyaataanong (Waa-we-yaa-tih-nong), also referred to as Detroit, the ancestral and contemporary homeland of the Three Fires Confederacy. These sovereign lands were granted by the Ojibwe (Oh-jib-way), Odawa (Oh-daa-waa), Potawatomi (Pow-tuh-waa-tuh-mee), and Wyandot nations, in 1807, through the Treaty of Detroit. Wayne State University affirms Indigenous sovereignty and honors all tribes with a connection to Detroit.

Radical Welcome

Welcoming Transgender/Non-binary/Gender Nonconforming folks

(Adapted from the 2019 Creating Change--National LGBT Task Force--conference program)

To create radical welcome for members of the Transgender, Non-binary, and Gender Nonconforming (Transgender, Transsexual, genderqueer and more) communities please remember that a person's purposeful gender expression or external appearance may not match their internal gender identity.

About pronouns:

- In this space, we are committed to not making assumptions about anyone's gender identity based on the way they look, sound, or behave.
- Ask "What pronouns do you use?"
- When in doubt use a person's name or gender neutral pronouns, for example, "they/them/theirs".
- Please call people what they ask you to call them and use the pronouns that people ask you to use.
- Remind yourself that some people may be expressing gender differently than the last time you encountered them.
- When you make a mistake about someone's pronoun, make the correction and move on.

Showing up:

Please listen to transgender people's needs and stories when they are volunteered. Respect people's privacy and boundaries and do not ask questions that would wouldn't ask of anyone else.

Introduction

2023 CHECK-UP Community-Engaged Research Workshop Series

Meaningful engagement of diverse community stakeholders in research is increasingly prioritized by federal and philanthropic funding agencies. Although demand for engagement is increasing, support and training for skill building has not kept pace. To address this issue, we will facilitate a series of workshops to build the skills and capacity of academic and community experts.

The workshops we will provide are tailored to the interests and needs of attendees of the 2022 Community-Engaged Research (CEnR) Symposium held at Wayne State University. The symposium occurred over six days in September, October, and November, focused on three unique health equity populations, and had 381 individual attendees including community stakeholders, students, clinicians, and academic faculty and staff. Our workshops are developed in response to the evaluation responses we received, and provide critical insight into the landscape of CEnR, so that academic and community experts are better prepared to interact effectively and collaborate equitably, before, during, and after a project is funded.

Workshop 1: Processes and Practices for Cultivating Meaningful Community-Academic Partnerships: From Concept to Action

Cultivating community stakeholder-scientist connections to engage in partnerships can be accelerated by fostering meaningful dialogue and finding common ground in the earliest stages of partnerships. To foster such connections, this workshop will offer strategies and provide tools for researchers and community stakeholders, so they are better prepared to collaborate equitably and interact effectively. Topics will include considerations in selecting a community engagement approach, strategies to identify and engage potential community partners (e.g., CAB), best practices for first encounters, understanding and increasing research capacity within communities, and setting appropriate expectations for partners and projects. As part of the workshop, participants will work through community engagement plans. Specific objectives will include:

- Review key principles of community-engaged research
- Identify strategies for connecting with relevant community stakeholders
- Understand and clarify roles and frameworks for equitable compensation
- Identify existing resources available for formalizing academic-community research partnerships such as MOUs
- Discuss ethical considerations of engaging community stakeholders in research
- Identify existing resources available for nurturing and improving academic-community research partnerships such as partnership evaluation tools
- Examine real world case-studies and examples of community-engaged work
- Support attendees in preliminary planning of community-engaged research initiatives

Introduction

The Wayne State University (WSU) School of Medicine Center for Health Equity and Community Knowledge in Urban Populations (CHECK-UP)

CHECK-UP was established in 2021 with the support of the WSU Office of the Vice President of Research (OVPR) to provide an infrastructure to accelerate partnerships between metropolitan Detroit communities and WSU's schools, colleges, centers, and departments to identify, investigate, and act upon the barriers and bridges to health equity in the region. CHECK-UP is driven by the imperative that WSU prioritize and promote shared leadership with community stakeholders in medical and behavioral research. Methodologies that build engagement and participation are central to CHECK-UP because of their promise in reducing health disparities, increasing the public relevance of WSU's research, and expanding the reach of scientific discoveries throughout community at large. CHECK-UP leadership includes Hayley Thompson, PhD, Director, Carrie Leach, PhD, Associate Director of Community Inclusion, and Lisa Braddix, MPH, Steering Committee Chair.

Community Engaged Research (CEnR)

Community-engaged research (CEnR) is a process in which academic researchers work collaboratively with and through community members to identify and address issues affecting the well-being of communities. CEnR has been endorsed and recommended by many but applied by relatively few. This one-day symposium will provide opportunities to learn about and discuss the benefits gained from CEnR, as well as its challenges and strategies for conducting this CEnR successfully. This meeting will also be an opportunity to learn from and network with community members who have identified research priorities for their communities. Topics that will be addressed will include the following:

- How does community engagement contribute to stronger science?
- What are successful models of community-engaged scholarship that academic researchers can follow?
- How can academic institutions support community-engaged scholarship among faculty
- What are the health research priorities within local Detroit communities?
- What kinds of local opportunities are there for community-engaged research?

Agenda

2023 CHECK-UP Community-Engaged Research Workshop Series:
"Processes and Practices for Cultivating Meaningful Community-Academic
Partnerships: From Concept to Action"

THURSDAY, APRIL 27

- | | IN-PERSON | ZOOM |
|---------|---|------------------|
| 6:00 PM | Dinner & Networking | Speed Networking |
| 6:30 PM | Welcome & Overview
Hayley S. Thompson, PhD | |
| 6:40 PM | Community-Engaged Research Overview
Carrie Leach, PhD, MPA | |
| 6:50 PM | Laying the Foundation for Successful
Community-Engaged Partnerships
Chandra McMillion | |
| 7:05 PM | Equity in Partnership
Rodlescia Sneed, PhD, MPH | |
| 7:20 PM | Growing Together: Lessons Learned in Establishing
& Maintaining Partnership: A Case Study
Elizabeth Towner, PhD | |
| 7:35 PM | Question & Answer | |
| 7:55 PM | Wrap-up & Evaluation
Hayley S. Thompson, PhD | |
| 8:00 PM | End | |



Presenters & Planning Committee

Chandra McMillion, CEO & Founder, McMillion Group

Chandra McMillion is the CEO and founder of the McMillion Group. The McMillion Group is a full-service strategy consulting, project leadership and implementation support firm specializing in organizational development, leadership and board development, community change and social justice. The Detroit 21 is one of our key clients and we are representing the interests of this collaborative of Executive Directors from community development organizations from across Detroit.



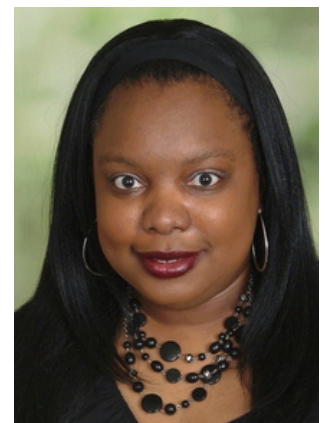
Elizabeth Towner, PhD, Family Medicine & Public Health Sciences, WSU School of Medicine

Elizabeth Towner, PhD is an Assistant Professor within the Department of Family Medicine and Public Health Sciences, Division of Behavioral Sciences at the Wayne State University School of Medicine. Her research focuses broadly on pediatric obesity, health equity, and developing family-based health behavioral interventions. Her recent work includes partnerships with the Michigan Special Supplemental Nutrition Program for Women, Infants, and Children (WIC) to develop preschool obesity interventions, interdisciplinary collaborations to develop innovative approaches for increasing the efficiency and consistency of screening for pediatric obesity in primary care settings, and identifying food purchasing patterns, resource management skills, and routines that increase obesity risk among low-income families with preschool-aged children.



Rodlescia Sneed, PhD, MPH, Institute of Gerontology, Department of Psychology, WSU

Rodlescia Sneed, PhD, MPH, is a social gerontologist interested in how the social environment impacts adult developing and aging in diverse populations of mid and late-life adults. She has expertise in biopsychosocial models of health, community-engaged research, and chronic disease. Dr. Sneed's work engages community and institutional stakeholders to identify and improve upon factors that contribute to inequities in health and well-being among mid and late-life adults.



CHECK-UP Team

Hayley Thompson, PhD, CHECK-UP Director

Hayley S. Thompson, PhD, is a professor in the Department of Oncology at Wayne State University and the Associate Center Director for Community Outreach and Engagement at the Karmanos Cancer Institute (KCI), an NCI-designated comprehensive cancer center. In this role, she established KCI's Office of Cancer Health Equity and Community Engagement (OCHECE) and serves as its faculty supervisor. She is also founding director of the emerging Wayne State University Center for Health Equity and Community Knowledge in Urban Populations (CHECK-UP). She is a clinical psychologist whose research addresses racial and ethnic disparities in cancer care and outcomes. Her primary focus is community-based intervention research, including investigations of cancer survivorship. She has received funding from the National Cancer Institute, the American Cancer Society, the National Heart, Lung, and Blood Institute, the Agency for Healthcare Research and Quality, the Patient-Centered Outcomes and Research Institute, and other agencies and foundations. She is currently a co-principal investigator on the NCI-funded African American Resilience in Surviving Cancer (ARISE) Study. Her research also addresses sociocultural assessment in diverse populations. She led the development of the Group-Based Medical Mistrust Scale (GBMMS), widely used in health disparities research, administered in over 100 published, peer-reviewed studies. She currently directs Michigan Cancer HealthLink, a community-academic partnership to build research capacity in diverse communities within Karmanos Cancer Institute's 46-county catchment area with 150 community members involved in contributing to Karmanos' research agenda. She is also Director of the Community Health Scholars Program within CHECK-UP, designed to support metro Detroit residents in building and applying research skills.



Carrie Leach, PhD, MPA, CHECK-UP Co-Director of Community Inclusion

Carrie Leach is an Assistant Professor of Research at the Institute of Gerontology, Community Engagement Program Manager at the Center for Urban Responses to Environmental Stressors (CURES), and Associate Director for Community Inclusion at the Center for Health Equity and Community Knowledge in Urban Populations (CHECK-UP) at WSU. Dr. Leach has expertise in health communication, participatory and action research, digital and health literacy, and community-based and aging services delivery and communication. Her research, expertise, and driving passion are focused on improving communication inequities, decision making and public health by developing community-driven solutions derived from participatory processes. Her work at the IOG has focused on partnering with organizational leaders and community residents to evaluate and examine the needs of more than 5,500 older adults across Michigan to translate findings into actionable improvements in aging and community-based services practice and policy. At CURES she works with community stakeholders and researchers to co-construct multi-media materials aimed at improving environmental health literacy in Detroit. Those efforts resulted in disseminating health-protecting information to more than 5,000 Detroiters through face-to-face interactions and thousands more on-line. Her overarching aim is to foster University in-reach, so that the science community and expertise can be leveraged to the benefit of the public, and likewise, so researchers can learn through community engaged experiences and be better allies through their work.



Lisa Braddix, MPH, CHECK-UP Steering Committee Chair

Lisa Braddix is the Chief Health Equity Officer for the Southeastern Michigan Health Association where she works to foster organizational collaboration to improve community health using practical approaches that will eliminate health disparities in marginalized populations throughout southeast Michigan. Lisa has spent several years working in community health and is passionate about issues related to health disparities and health equity. Lisa serves as the Steering Committee Chair for the Center for Health Equity and Community Knowledge in Urban Populations at Wayne State University. She also is the chair of the Michigan Cancer Consortium Health Equity and Policy Committee and a co-chair of the Healthy Pontiac We Can! Coalition. Lisa is a native of Cleveland, Ohio and a graduate of The Ohio State University with a Bachelor of Science Degree in Biological Sciences and has a Master of Public Health Degree from the University of Michigan. She has also earned a graduate certificate in Non-Profit Management from Eastern Michigan University and is currently a doctoral student at Wayne State University studying the Sociology of Health and Illness.



Alex Sass, MSW

Alex Sass is the manager of research and operations for CHECK-UP. In this position she supports the CEnR Symposium Planning Committees, CHECK-UP Research Networks, as well as the administrative side of CHECK-UP. Additionally, Alex works as a research assistant at Karmanos Cancer Institute, Office of Cancer Health Equity and Community Engagement (OCHECE) supporting the work of the Genesee County Cancer Action Council. While receiving her Master's of Social Work at the University of Michigan, her training focused on community-engaged research and health disparities. Alex also works as a research assistant under the NIA funded "Recruiting and Retaining Older African Americans into Research" funding the Healthier Black Elders of Flint program.



CHECK-UP Team

Ten-Niah Kinney, MPH

Ten-Niah Kinney is a Research Assistant in the Department of Oncology at Wayne State University School of Medicine and project manager at CHECK-UP. She received her bachelor's degree from Michigan State University in Human Biology and is a current Master of Public Health student at Wayne State University. At WSU, Ten-Niah has worked on several research projects targeting community assessment, developing engagement programming, and methods to improve health outcomes in vulnerable populations. Previously Ten-Niah worked in collaboration with CVS Health, as a COVID immunizer and health care ambassador where she partnered on pharmacy community campaigns that addressed barriers to medication adherence and care accessibility.



Mikayla Harrison, BS

Mikayla Harrison is the newest member of the Center for Health Equity and Community Knowledge in Urban Populations (CHECK UP) team. Mikayla is a passionate advocate for health equity, and we are thrilled to have her on board to help us further our mission of decreasing the cancer burden in the KCI catchment area. Mikayla is originally from Detroit, Michigan, where she attended Cass Technical High School. She obtained her Bachelor of Science in Human Biology with a minor in Religion from Michigan State University in May 2022. Mikayla is currently pursuing a Masters of Public Health at Michigan State University College of Human Medicine. Mikayla has been committed to giving back to her community throughout her educational journey. She has volunteered with organizations such as Habitat for Humanity and the American Red Cross. Mikayla volunteers at Hannah's House, a shelter for disadvantaged pregnant women, and Sparrow Hospital's Emergency Department, both in East Lansing. At CHECK UP, Mikayla's core projects include working with the Cancer Action Councils and African American Resilience in Surviving Cancer. Mikayla is excited to contribute her skills and knowledge to CHECK UP's efforts to educate and empower communities.



CHECK-UP Team

Zachary Cichon, BS

Zach Cichon, BS is a Research Assistant at Karmanos Cancer Institute, Office of Cancer Health Equity and Community Engagement (OCHECE) and Wayne State University School of Medicine (WSU SOM), Department of Oncology. Zach works closely with Cancer Action Councils (CACs) as well as with CHECK-UP research networks to help cancer survivors, caregivers, and community members build capacity and participate in research. He is currently earning a Master's of Public Health (MPH) degree with a concentration in population health analytics from Wayne State University. He is interested in identifying health disparities and addressing them through community level interventions.



Zainab Ahmed, BS

My name is Zainab Ahmed. I am a graduate student in my second year at Wayne State University's MPH program and hope to graduate in May 2024. I was born in Grand Rapids but was in the suburbs of Detroit. I graduated from Wayne State with my Bachelor's of Science in Public Health with University Honors back in 2021. I got into research in my second year of my undergraduate studies and worked on a feasibility study that was funded through the Undergraduate Research Opportunity Program (UROP) and was lucky enough to be selected to present at the NCUR in Atlanta, Georgia in 2019. A cool fact about me is that I am a henna artist! I love working with henna as a medium as it is a huge part of my culture and something I love to showcase.





WAYNE STATE CHECK-UP

Center for Health Equity and Community
Knowledge in Urban Populations

www.check-up.wayne.edu

Hayley Thompson, PhD
Director
hayley.thompson@wayne.edu

Alex Sass, MSW
Manager, Research & Operations
alexandra.sass@wayne.edu

Carrie Leach, PhD, MPA
Associate Director for Community
Inclusion
carrieleach@wayne.edu

Ten-Niah Kinney
Project Manager
ten-niah.kinney@wayne.edu