

## **2022 CEnR Symposium Series:**

**"Strengthening Community-Academic Research Relationships"**

Program 3:

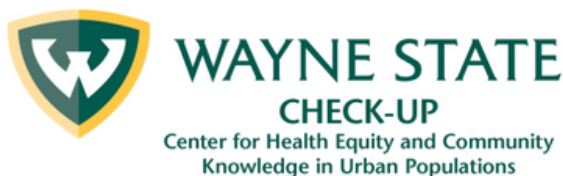
### **Middle Eastern/North African (MENA), Refugee, & Immigrant Health Equity**

November 1 & 2  
5:00 - 8:00 pm

# Acknowledgments

This symposium series is supported by the Office of the Vice President for Research at Wayne State University and sponsored by Wayne State University's Center for Health Equity and Community Knowledge in Urban Populations and Karmanos Cancer Institute's Office of Cancer Health Equity and Community Engagement.

The Wayne State University & Karmanos Cancer Institute Community Engaged Research Symposium Directors and Planning Committee wish to thank everyone who contributed their time and effort in making this event possible, including:



# Land Acknowledgment & The Legacy of Native Peoples

Wayne State University rests on Waawiyaataanong (Waa-we-yaa-tih-nong), also referred to as Detroit, the ancestral and contemporary homeland of the Three Fires Confederacy. These sovereign lands were granted by the Ojibwe (Oh-jib-way), Odawa (Oh-daa-waa), Potawatomi (Pow-tuh-waa-tuh-mee), and Wyandot nations, in 1807, through the Treaty of Detroit. Wayne State University affirms Indigenous sovereignty and honors all tribes with a connection to Detroit.

## Radical Welcome

### **Welcoming Transgender/Non-binary/Gender Nonconforming folks**

(Adapted from the 2019 Creating Change--National LGBT Task Force—conference program)

To create radical welcome for members of the Transgender, Non-binary, and Gender Nonconforming (Transgender, Transsexual, genderqueer and more) communities please remember that a person's purposeful gender expression or external appearance may not match their internal gender identity.

About pronouns:

- In this space, we are committed to not making assumptions about anyone's gender identity based on the way they look, sound, or behave.
- Ask "What pronouns do you use?"
- When in doubt use a person's name or gender neutral pronouns, for example, "they/them/theirs".
- Please call people what they ask you to call them and use the pronouns that people ask you to use.
- Remind yourself that some people may be expressing gender differently than the last time you encountered them.
- When you make a mistake about someone's pronoun, make the correction and move on.

Showing up:

Please listen to transgender people's needs and stories when they are volunteered. Respect people's privacy and boundaries and do not ask questions that would wouldn't ask of anyone else.

# Introduction

Thank you for attending the Wayne State University and Karmanos Cancer Institute 2022 Annual Community-Engaged Research (CEnR) Symposium!

In 2018, 2019, and 2020, the CEnR Symposium convened hundreds of community members and community-based organizations, as well as WSU faculty, staff, and students. The symposium, highlighted existing community-academic research partnerships, developed new partnerships, and provided opportunities to discuss the benefits and challenges of CEnR and strategies for conducting this work.

In 2022, we're doing things a little differently. This year's meeting instead of one symposium, we have coordinated three mini-symposia with the objective of developing three new, long-term research and programming networks:

- LGBTQ Health Equity Network
- Black Health and Racial Equity Network
- Middle Eastern, North African, Refugee, and Immigrant (MENARI) Health Equity Network

These networks will serve as ongoing workgroups that will meet on a regular basis following the symposia in which community and academic partners will collaborate on key areas identified during the symposia with the support of pilot funding.

View the past CEnR symposia [here](#).

## Community Engaged Research (CEnR)

Community-engaged research (CEnR) is a process in which academic researchers work collaboratively with and through community members to identify and address issues affecting the well-being of communities. CEnR has been endorsed and recommended by many but applied by relatively few. This one-day symposium will provide opportunities to learn about and discuss the benefits gained from CEnR, as well as its challenges and strategies for conducting this CEnR successfully. This meeting will also be an opportunity to learn from and network with community members who have identified research priorities for their communities. Topics that will be addressed will include the following:

- How does community engagement contribute to stronger science?
- What are successful models of community-engaged scholarship that academic researchers can follow?
- How can academic institutions support community-engaged scholarship among faculty
- What are the health research priorities within local Detroit communities?
- What kinds of local opportunities are there for community-engaged research?

## **The Wayne State University (WSU) School of Medicine Center for Health Equity and Community Knowledge in Urban Populations (CHECK-UP)**

CHECK-UP was established in 2021 with the support of the WSU Office of the Vice President of Research (OVPR) to provide an infrastructure to accelerate partnerships between metropolitan Detroit communities and WSU's schools, colleges, centers, and departments to identify, investigate, and act upon the barriers and bridges to health equity in the region. CHECK-UP is driven by the imperative that WSU prioritize and promote shared leadership with community stakeholders in medical and behavioral research. Methodologies that build engagement and participation are central to CHECK-UP because of their promise in reducing health disparities, increasing the public relevance of WSU's research, and expanding the reach of scientific discoveries throughout community at large. CHECK-UP leadership includes Hayley Thompson, PhD, Director, Carrie Leach, PhD, Associate Director of Community Inclusion, and Lisa Braddix, MPH, Steering Committee Chair.

## **The Karmanos Cancer Institute (KCI) Office of Cancer Health Equity and Community Engagement (OCHECE)**

OCHECE was established in 2017 with the overarching goal of connecting communities to KCI's science and KCI's science to communities. OCHECE coordinates community outreach and engagement activities across KCI's 46-county catchment area in Michigan, home to 6.7 million residents and is guided by a participatory research approach in which community stakeholders are actively engaged in research prioritization, implementation, and dissemination. Among OCHECE's many programs is Michigan Cancer HealthLink. Established in 2016, HealthLink is a network of Cancer Action Councils (CACs) organized as neighborhood-based and population-driven groups of cancer survivors, caregivers, and advocates who have been historically excluded from meaningful research collaborations. This infrastructure has provided a mechanism for community stakeholders to inform KCI's research agenda. Brittany Dowe, MPH, serves as OCHECE's Director and Hayley Thompson, PhD, serves as faculty supervisor.

# Overlapping Definitions

**Refugees** are forced to flee their own country because they are at risk of serious human rights violations and persecution there (e.g. wars, disasters, ...). The risks to their safety and life were so great that they felt they had no choice but to leave and seek safety outside their country because their own government cannot or will not protect them from those dangers. Refugees have a right to international protection.

**Immigrants** choose to leave their country of origin because they want to work, study or join family, for example. Others feel they must leave because of poverty, political unrest, gang violence, or other circumstances.

**Arab Americans** are a diverse group of immigrants with ancestry traced to Arabic-speaking countries including Algeria, Bahrain, Chad, Comoros, Djibouti, Egypt, Iraq, Jordan, Kuwait, Lebanon, Libya, Mauritania, Morocco, Oman, Qatar, Palestine, Saudi Arabia, Sudan, Syria, Somalia, Tunisia, United Arab Emirates, and Yemen. The Arab American population grew by more than 72% between 2000 and 2010. Census Estimated Arab American Population to be 2,041,484 however, other estimates are higher, e.g. Arab American Insinuation Adjusted this population total to 3,665,789

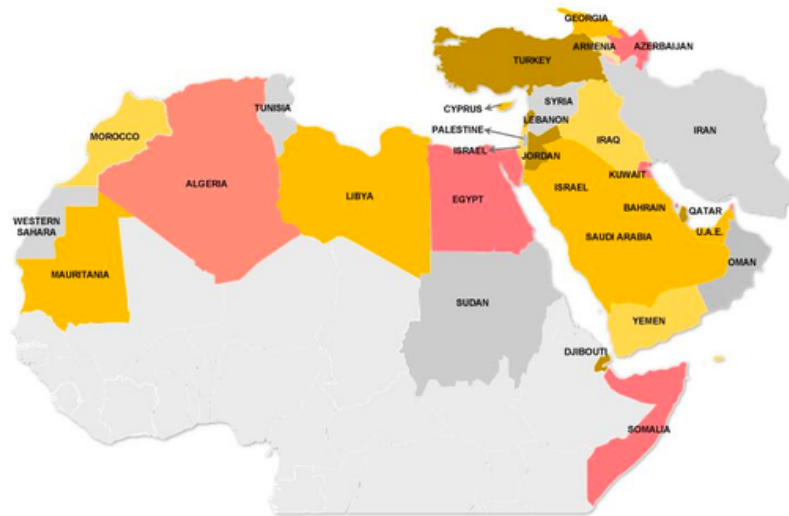




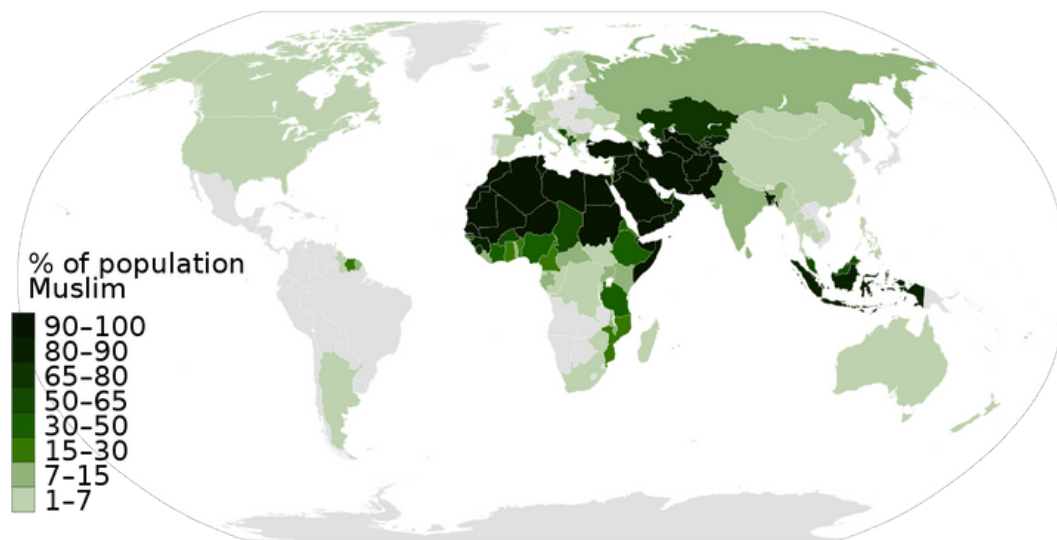
# Overlapping Definitions

**MENA population** is the waves of immigrants from the Middle East and North Africa (MENA) including Algeria, Bahrain, Egypt, Iraq, Jordan, Kuwait, Lebanon, Libya, Morocco (and Western Sahara), Occupied Palestinian Territories, Oman, Qatar, Saudi Arabia, Sudan, Syria, Tunisia, the United Arab Emirates, and Yemen. In addition to the Islamic State of Afghanistan, the Islamic Republic of Iran, Pakistan, Israel, and Turkey. The term WANA(West Asia and North Africa) is sometimes used interchangeably. Between 2000 and 2019, the immigrant population from the MENA region doubled from 596,000 to 1.2 million, representing a little less than 3 percent of the U.S. foreign-born population of 44.9 million as of 2019.

**Middle East & North Africa (MENA)**  
*Countries*



A **Muslim** is a believer in the religion of Islam Muslims believe that the word of God is written in the Qur'an, the Islamic holy book, and they follow the teachings of the prophet Muhammad. Worldwide, there are approximately 2 billion Muslims as of 2020. Muslims comprise more than 25% of the world population and 91% reside in the Middle East and in North Africa (MENA).



**Wayne State University & Karmanos Cancer Institute  
Fourth Annual Community-Engaged Research (CEnR) Symposium:  
“Strengthening Community-Academic Research Relationships”  
Program 3: MENA, Refugee, & Immigrant Health Equity**

**TUESDAY, NOVEMBER 1**

- 5:00 PM**      **Radical Welcome**  
Hayley S. Thompson, PhD
- Showing Up**  
Carrie Leach, PhD
- Symposium Overview**  
MENA, Refugee, & Immigrant Health Equity Symposium Planning Committee  
Chairs: Madiha Tariq, Maha Albdour, & Carrie Leach
- 5:20 PM**      **The State of MENA, Refugee, & Immigrant Health Equity**  
Dr. Mouhanad Hammami, President & CEO, Global Health Consultants
- 5:35 PM**      Breakout Rooms
- 5:50 PM**      **Social Determinants of MENA, Refugee, & Immigrant Health**  
Maha Albdour, PhD, RN, College of Nursing, WSU  
Linda Jaber, PharmD, College of Pharmacy & Health Sciences, WSU  
Babar Qadri, PA, HUDA Clinic
- 6:20 PM**      Breakout Rooms
- 6:35 PM**      Break
- 6:40 PM**      **MENA, Refugee, & Immigrant Mental Health & Wellness**  
Dalia Khalil, PhD, RN, College of Nursing, WSU  
Arash Javanbakht, MD, School of Medicine, WSU  
Naghah Dabaja, MA, Supervisor of Survivors of Violence Empowerment Programs,  
ACCESS
- 7:00 PM**      Breakout Rooms
- 7:25 PM**      **Agenda Setting**
- 7:55 PM**      **Evaluation & Wrap-Up**  
Madiha Tariq, Maha Albdour, & Carrie Leach



**Wayne State University & Karmanos Cancer Institute  
Fourth Annual Community-Engaged Research (CEnR) Symposium:  
“Strengthening Community-Academic Research Relationships”  
Program 3: MENA, Refugee, & Immigrant Health**

**WEDNESDAY, NOVEMBER 2**

- 5:00 PM**      **Welcome, Summary of Day 1 & Day 2 Overview**  
Black Health & Racial Equity Symposium Planning Committee Chairs: Madiha Tariq  
& Maha Albdour
- 5:15 PM**      **Access & Equity**  
Madiha Tariq, MPH, Deputy Director, ACCESS  
Florence Dallo, PhD, MPH, School of Health Sciences, Oakland University
- 5:30 PM**      Breakout Rooms
- 5:45 PM**      **Policy**  
Helen McGuirk, MPH, State Refugee Health Coordinator, Office of Global  
Michigan, Department of Labor and Economic Opportunity  
Ali Abazeed, MPH, Director of Public Health, City of Dearborn  
Rose Khalifa, RN, BSN, Executive Director, National Arab American Nurses  
Association
- 6:10 PM**      **Setting Action Items in Breakout Rooms**
- 6:30 PM**      **Agenda Setting**
- 6:55 PM**      Break
- 7:00 PM**      **Open Forum: Methodological Challenges Conducting MENARI Research**  
Maha Albdour & Madiha Tariq
- 7:30 PM**      **Evaluation, Wrap-up, & Future Directions**  
Hayley S. Thompson

## Planning Committee Co-Chairs

### **Madiha Tariq, MPH, Symposium Co-Chair**

As Public Health Director at the ACCESS Community Health and Research Center Madiha Tariq oversees health promotion and disease prevention programs with a focus on immigrant and refugee communities. She has served as project director on several complex federal grants, including a highly successful health insurance navigator program, which gained recognition from President Obama. She has published research on access to care, mental health, chronic disease, and other issues linked to Arab health. Madiha chairs the Arab Health Summit, which is the only platform for ground-breaking research on health issues in Arab communities. She is a Robert Wood Johnson Foundation Interdisciplinary Research Leadership Program Fellow and holds a Master's in Public Health from George Washington University.



### **Maha Albdour, PhD, RN, Symposium Co-Chair**

Maha Albdour is a board-certified advanced public health nurse who earned her Ph.D. in Nursing at Wayne State University in 2017. Her research interest is the health of minority and immigrant adolescents and young adults. She conducted several projects among the Arab American community exploring psychosocial stressors such as childhood adversities (including war, armed conflicts, and community violence experiences), discrimination, acculturative stress, social support, and parent-child relationship influence on physical and mental health of adolescents and young adults. Dr. Albdour has recently concluded a study that examined the effect of past and current multiple stressors and their effects on the Endocrine system (cortisol levels) and health, both mental and physical, of immigrant young adults of Arabic descent. Currently, Dr. Albdour received funding for her study "depression and Metabolic Syndrome (MetS) in Arab-American parent-adolescent dyads", which will examine the interaction between parental and adolescent psycho-social stressors and their effects on mental health and cardiovascular disease risk among both parents and their children. The study was funded by WSU-ACCESS initiatives for pilot data supporting community-engaged research. In addition, Dr. Albdour is currently the principal investigator for a study that focuses on medical mistrust among ethnic minority young adults. Dr. Albdour has received the Midwest Nursing Society (MNRS) Adolescents Health Research Interest Group new investigator award to acknowledge her work with minority adolescents.



### **Mouhanad Hammami, MD, MHSA**

Mouhanad Hammami is the president and CEO of Global Health Consultants, a consulting firm that addresses healthcare and wellness locally and globally with a focus on complete wellness, equity and social justice. Dr. Hammami previously served as Chief Health Strategist for Wayne County in Michigan, catering for the health and wellbeing of 1.2 million residents in the most populous county in Michigan. Prior to that he served as the senior vice president for Safety Net Transformation, Community Benefits, Health and Well-Being at Trinity Health. In this role, he led the strategy to improve health for individuals and improve the underlying social determinants of health in communities served. He also led work for Trinity Health's community-based delivery models and public health initiatives and partnered closely with state and national experts to integrate health care delivery with public health activities. Prior to his position with Trinity Health, Dr. Hammami served as director of the Wayne County (Michigan) Department of Health, Veterans and Community Wellness. There he oversaw all health, wellness, and human services for the 13th largest county in the nation. Before that, Hammami was chief of Health Operations and county health officer for the Wayne County Department of Health and Human Services. Hammami also served as the executive director of the National Arab American Medical Association (NAAMA) from 2006 to 2009 and then elected as its national president in 2011. A graduate of Aleppo University School of Medicine, Syria, Hammami completed his postdoctoral research in pediatrics at the Newborn Center of the University of Tennessee in Memphis, and then accepted a faculty appointment at Wayne State University School of Medicine in Detroit, Michigan, and a research position at the Detroit Medical Center, Department of Pediatrics. He then received his master's in health services administration from the University of Michigan. Hammami has been the recipient of several recognitions including the American Medical Association Foundation Excellence in Medicine and Leadership Award for his public health advocacy and community work.



### **Helen McGuirk, MPH**

Helen McGuirk, MPH, is the State Refugee Health Coordinator for the Refugee Services program in the Office of Global Michigan, Department of Labor and Economic Opportunity. Helen is responsible for coordination of domestic medical screening and establishing access to health care services for newly arrived refugees. She also assists with the identification and creation of partnerships, community outreach, and engagement to ensure successful, long-term resettlement for all humanitarian arrivals in Michigan. Helen is particularly interested in engaging community members and stakeholders in the development and implementation of refugee support and resettlement programming. Prior to her current role, Helen acted as the Tuberculosis Public Health Consultant in the Michigan Department of Health and Human Services, from 2015-2021, providing federal and state public health guidance for tuberculosis programs in Michigan. Helen received her MPH with a specialization in Infectious Diseases and Microbiology from the University of Pittsburgh Graduate School of Public Health in 2014.

# Planning Committee

## Yolanda Hill-Ashford

Yolanda R. Hill- Ashford, MSW, is currently the Director of Public Health Programs at the city of Detroit- Health Department where she has administrative oversight of 4 divisions that include; Community Health Services; Environmental Health & Food Safety; HIV/STI and Behavioral Health; with direct management of 5 programs including; Safe Routes Ambassadors Program, Fetal Infant Mortality Review (FIMR), Maternal Mortality & Vitality Review Team (MMVRT), Community Health Worker-training, Hope Starts Here-Imperative 1, and our recently funded Senior Initiative- RESET (ReEngaging in Selfcare and Enjoying Today). Yolanda has over 31 years in public health with an extensive background in Community Based Participatory Research (CBPR), program development, outreach, education and training. She was also instrumental in the implementation and operationalizing of 2 major initiatives in Detroit to address infant mortality; SisterFriends Detroit and the nationally recognized “Women Inspired Neighborhood Network- Detroit also called, Sew Up the Safety Net for Women and Children” both are infant mortality reduction programs focusing on utilizing Community Health Workers to address the Social Determinants of Health to impact birth outcomes (Women Inspired Neighborhood Network Detroit is a program of Henry Ford Health System in Detroit). She has worked diligently building collaboratives, for the empowerment, employment and training of community health workers (CHW’s) in the city of Detroit. Working collectively with educational institutions, the community, public and private business sectors Yolanda chaired the development of a certificate program for CHW’s at Wayne County Community College in the early 2000’s before it was a recognized labor force field. To date with the development of The Center for Community Health Workers She aims to continue to advocate for the advancement of this unique workforce through upskilling, cross training as well as the provision of career and educational ladders. Yolanda has participated in numerous research initiatives, journal writings, as well as local and national presentations that focused on maternal child health, social justice, the social determinants of health, health literacy, asthma, diabetes, cardiovascular disease, health promotion, breast and cervical cancer, health equity and so much more. Yolanda’s goals as a public health social worker are grounded in her desire to ensure a healthy life for all who live work visit or play in the city of Detroit.



## Babar Qadri, MS

Babar Qadri received his MS in Physician Assistant Studies from Mercy College in 2010. He has served as the Educational Director at the Health Unit on Davison Avenue Clinic (HUDA Clinic) and is the founder of the HUDA Urban Garden. Babar is also a professor at the Wayne State University Applebaum College of Pharmacy and Health Sciences. Babar specializes in integrative medicine with a focus on orthopedics and emergency medicine.





## Planning Committee

### **Zena Hamden, PhD, MS**

Zena H. Hamdan is the Coordinator of Health Education at the 1795 Group. She received her Bachelor of Science Degree in Medical Laboratory Sciences; she earned two Master's Degrees in Environmental Health Sciences from the American University of Beirut and Toxicology from Wayne State University; and then her Doctoral Degree in Health Education and Promotion from Walden University. She also holds Adjunct Faculty positions at the University of Detroit Mercy, and Capella University where she teaches multiple public health and science courses.



### **Dalia Khalil, PhD, RN**

Dalia Khalil earned her PhD in Nursing and Infant Mental Health from WSU in 2017 and was appointed as an Assistant Professor in the college of nursing the same year. Her work has focused on the impact of parents' stress, depression, and trauma on infants (6-24 months old) as well as older children (7-18 years) among refugee and immigrant families of Arabic descent. Her research is focused on examining symptoms of anxiety, depression, and posttraumatic stress disorder, parenting, coparenting, as well as behavioral and biological correlates, using self-reported measures of psychosocial factors and behavioral development. Additionally, buccal swabs are collected to measure telomere length and hair samples to measure cortisol levels among study participants. In November 2020, her team received funding from the National Institute of Health (NIH), Eunice Kennedy Shriver National Institute of Child Health and Human Development (NICHD) for their R03 study entitled "Family Stress, Coparenting, and Infant Development among Immigrant Arab American Families". Additionally, they have received the 2021 Brain and Behavior Research Foundation (BBRF) NARSAD Young Investigator Grant for our study titled: "Psychobiological Factors Affecting Mental Health among Immigrant and Refugee Parents and their Children." Understanding the effects of migration-related stressors on parents and children is imperative for articulating risk and protective factors influencing infant and children's outcomes. Dr. Khalial's long-term goal is to guide the development of interventions to prevent the negative effects of family stress (maternal and paternal) on their children.



## Asfar Azmi, MD

Dr. Asfar Azmi an Associate Professor of Oncology at Wayne State University School of Medicine. He is the Leader of Molecular Therapeutics Research Program as well as the Director of Pancreas Cancer Research at the NCI designated Comprehensive Cancer Center Karmanos Cancer in Detroit Michigan. He has a record of accomplishment in the area of drug discovery research. Dr. Azmi has made significant contributions on pre-clinical and early phase development of new drugs for pancreatic cancer particularly, nuclear export inhibitor selinexor and KRAS pathway targeted therapies. Work done by his team led to the FDA approval of selinexor in several tumor indications. Dr. Azmi has published more than 150 peer reviewed articles in prestigious journals such as Gastroenterology, Oncogene, Clinical Cancer Research, Journal of Biological Chemistry, Molecular Cancer Therapeutics, Nature Reviews Clinical Oncology and Seminars in Cancer Biology. He is the editor of several books on drug discovery topics. Dr. Azmi is the recipient of NIH MERIT award, and young investigator awards from American Pancreatic Association and American Association for Cancer Research (AACR). He is the recipient of Academy of Scholars Award from Wayne State University, Kales Endowed Faculty Award and Heroes of Cancer Award from Karmanos Cancer Institute. His lab is continuously funded by NIH and pharma industry.



## Arash Javanbakht, MD

Arash Javanbakht, MD, is a psychiatrist and serves as the director of the Stress, Trauma, and Anxiety Research Clinic (STARC). He is nationally known for his clinical and research work on anxiety, trauma, and PTSD. He is heavily involved in treatment of civilians, refugees, and first responders with PTSD. Dr Javanbakht's research examines the impact of exposure to war trauma in adults and children Syrian and Iraqi refugees, and biological and psychological factors of risk and resilience. This work is funded by an NICHD R01 award. STARC also uses art, dance and movement, and yoga and mindfulness in helping refugee families overcome stress. Dr Javanbakht work in treatment and research of trauma among first responders is funded by the State of Michigan. STARC is also a national leader in utilization of augmented reality and telemedicine technologies for treatment for anxiety disorders and PTSD. Dr Javanbakht's work has been featured on the CNN, National Geographic, Aljazeera, NPR, Scientific American, Washington Post, Smithsonian, PBS, Science, Lancet, American Psychiatric Association Press Briefing, Anxiety and Depression Association of America, American Academy of Child and Adolescent Psychiatry, and tens of other media outlets.

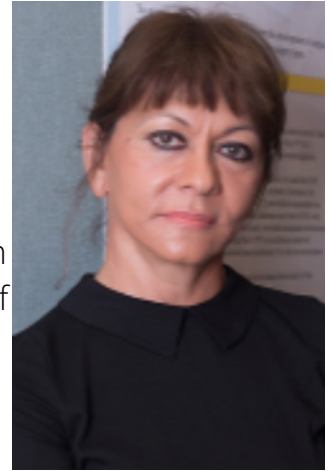




## Guest Presenters

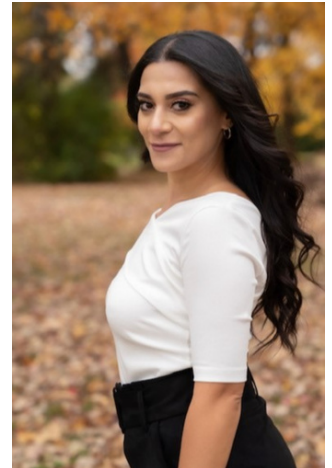
### **Linda Jaber, PharmD**

Dr. Linda Jaber is a Professor of Pharmacy Practice at Wayne State University Eugene Applebaum College of Pharmacy and Health Sciences. She obtained her Pharm.D. from Wayne State University. Dr. Jaber is a national expert in diabetes treatment. Her studies of the epidemiology and risk factors of diabetes, pre-diabetes, and the metabolic syndrome among Arab Americans provide the first representative, population-based, cross-sectional estimates of these conditions in this ethnic group. Her research has also focused on determining the responses of patients with diabetes to chronic hypoglycemic agents, exploring the racial differences in sensitivity and specificity of glycated hemoglobin in identifying diabetes and pre-diabetes, and on diabetes prevention in the Arab American community.



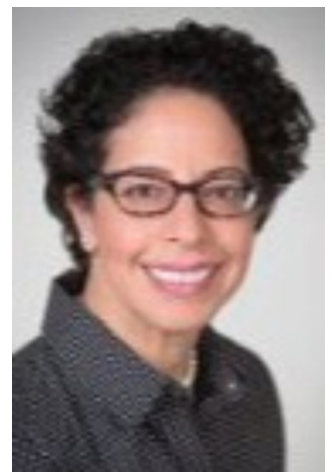
### **Naghm Dabaja, MA**

Naghm Dabaja is a Wayne State University graduate with her Masters of Arts specializing in Clinical Counseling. She is currently employed as Supervisor of the Survivors of Violence Empowerment Programs in the Community Health and Research Center at ACCESS. She currently oversees all Victims Services Programs at ACCESS. She has extensive experience in working with survivors on a case management and therapeutic level and has been employed by the organization for nearly 8 years.



### **Florence J. Dallo, PhD, MPH**

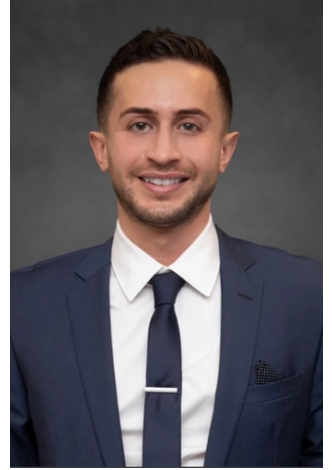
Dr. Dallo currently a Professor and Associate Dean in the School of Health Sciences at Oakland University. As a Chaldean (Iraqi Catholic) immigrant growing up in a racially and ethnically diverse community, she was curious why some individuals led healthy lives, while others did not. For her Master's in Public Health thesis, she interviewed 130 Chaldean American women in Detroit to better understand the link between acculturation and blood pressure. After that experience, she knew my passion was to promote health and prevent disease in minority communities. After obtaining her PhD and completing a two-year Kellogg Health Disparities Post-Doctoral Fellowship, she began as an assistant professor at the University of Texas, School of Public Health in Dallas. During her three years in Dallas, and while teaching and mentoring students, she published several manuscripts, many related to the health of Arab and Chaldean-Americans. Her most recent grant support from the Covid-19 Rapid Response Initiative demonstrated that Arab Americans have three times the rates of cases compared to non-Hispanic blacks and Hispanics.



## Guest Presenters

### **Ali Abazeed, MPH, MPP**

Health (DPH). A Dearborn native, he recently moved home from Washington D.C. where he served as a Public Health Advisor at the National Institutes of Health (NIH). He joined public service as a Presidential Management Fellow (PMF) and has worked across the U.S. Department of Health and Human Services in the Office of the Secretary, Office of Refugee Resettlement, and the Assistant Secretary for Policy and Evaluation. He has led a health and social policy portfolio ranging from homelessness eradication, the health of rural and tribal America, cancer prevention and control, and mitigating the effects of the global refugee crisis. Prior to joining the federal government, Ali served as an advisor at the Detroit Health Department where he bolstered efforts to reverse water shutoffs and revitalize human services following the city's bankruptcy. He developed robust comparative perspectives working on maternal and child health with the United Nations in the refugee camps of Lebanon. Ali is a three-time graduate of the University of Michigan, earning a MPH, MPP, and a BS. DPH was formally launched in April 2022 and Dearborn is only the second city in Michigan with a formal health department, and the first to launch one voluntarily. DPH is piloting a health-in-all-policies approach, a collaborative approach that integrates and articulates health considerations into policymaking across sectors to improve the health of Dearborn communities and residents.



### **Rose Khalifa, RN, BSN**

Rose Khalifa is the CEO of Metro Solutions. She was appointed Executive Director of Metro Solutions in April 2007. Responsible for establishing and executing Metro's major objectives, she provides leadership, direction and guidance for all Metro Solutions activities in addition to representing Metro Solutions to regulatory agencies, general public and community. From 1998 to 2007, Rose worked for Oakwood Healthcare System as Clinical Nurse Educator focusing on the needs of culturally diverse patients and the development of programs within the Oakwood System to respond to those needs. She co-hosted "Ask Oakwood," an educational bilingual live television program in Dearborn, Michigan. In 2006, she was certified as a Trainer in Cultural Competence by Network Omni and conducts training and presentations nationally. Rose Khalifa is President and Founder of the National American Arab Nurses Association (NAANA), a Founding Member of American Arab Women's Business Council (AAWBC), and continues to serve on numerous boards. Rose has been recognized with the 2002 Michigan Department of Community Health's Professional Service Award; 2002 Nightingale Excellence in Nursing Education & Research Award from Oakland University's School of Nursing; 2003 Nursing Spectrum Nurse of the Year; 2003 Nurse Week's Magazine Nursing Excellence Winner; 2003 YWCA Women of Achievement Award; 2004 Outstanding Alumni Award from Henry Ford Community College; and 2008 International Nurse Award from University of Calgary-Qatar. Rose is most proud of her role as a mother of two children.



## Hayley Thompson, PhD, Symposium Leader

Hayley S. Thompson, PhD, is a professor in the Department of Oncology at Wayne State University and the Associate Center Director for Community Outreach and Engagement at the Karmanos Cancer Institute (KCI), an NCI-designated comprehensive cancer center. In this role, she established KCI's Office of Cancer Health Equity and Community Engagement (OCHECE) and serves as its faculty supervisor. She is also founding director of the emerging Wayne State University Center for Health Equity and Community Knowledge in Urban Populations (CHECK-UP). She is a clinical psychologist whose research addresses racial and ethnic disparities in cancer care and outcomes. Her primary focus is community-based intervention research, including investigations of cancer survivorship. She has received funding from the National Cancer Institute, the American Cancer Society, the National Heart, Lung, and Blood Institute, the Agency for Healthcare Research and Quality, the Patient-Centered Outcomes and Research Institute, and other agencies and foundations. She is currently a co-principal investigator on the NCI-funded African American Resilience in Surviving Cancer (ARISE) Study. Her research also addresses sociocultural assessment in diverse populations. She led the development of the Group-Based Medical Mistrust Scale (GBMMS), widely used in health disparities research, administered in over 100 published, peer-reviewed studies. She currently directs Michigan Cancer HealthLink, a community-academic partnership to build research capacity in diverse communities within Karmanos Cancer Institute's 46-county catchment area with 150 community members involved in contributing to Karmanos' research agenda. She is also Director of the Community Health Scholars Program within CHECK-UP, designed to support metro Detroit residents in building and applying research skills.



## Carrie Leach, PhD, MPA, Symposium Leader

Carrie Leach is an Assistant Professor of Research at the Institute of Gerontology, Community Engagement Program Manager at the Center for Urban Responses to Environmental Stressors (CURES), and Associate Director for Community Inclusion at the Center for Health Equity and Community Knowledge in Urban Populations (CHECK-UP) at WSU. Dr. Leach has expertise in health communication, participatory and action research, digital and health literacy, and community-based and aging services delivery and communication. Her research, expertise, and driving passion are focused on improving communication inequities, decision making and public health by developing community-driven solutions derived from participatory processes. Her work at the IOG has focused on partnering with organizational leaders and community residents to evaluate and examine the needs of more than 5,500 older adults across Michigan to translate findings into actionable improvements in aging and community-based services practice and policy. At CURES she works with community stakeholders and researchers to co-construct multi-media materials aimed at improving environmental health literacy in Detroit. Those efforts resulted in disseminating health-protecting information to more than 5,000 Detroiters through face-to-face interactions and thousands more on-line. Her overarching aim is to foster University in-reach, so that the science community and expertise can be leveraged to the benefit of the public, and likewise, so researchers can learn through community engaged experiences and be better allies through their work.





## **Lisa Braddix, MPH, Symposium Leader**

Lisa Braddix is the Center for Health Equity and Community Knowledge in Urban Populations (CHECK-UP) Steering Committee Chair. Lisa is a Program Manager with the Michigan Public Health Institute where she oversees projects that seek to eliminate health disparities in marginalized populations and fosters organizational collaboration to improve the health of communities throughout southeast Michigan. Lisa also serves as the Chairman for the Michigan Cancer Consortium Health Equity Committee and as Co-Chairman for the Healthy Pontiac We Can! Coalition. She has spent several years working in community health and is passionate about issues related to health disparities and health equity.



## **M. Safwan Badr, MD, MBA**

Dr. Badr is the chair of the Wayne State University School of Medicine Department of Internal Medicine. A professor of Internal Medicine, Physiology and Biomedical Engineering, Dr. Badr is also a staff physician at the John D. Dingell VA Medical Center. He has mentored numerous trainees and junior faculty members who have launched successful academic careers. Dr. Badr is a co-director of CHECK-UP.



## **Alex Sass, MSW**

Alex Sass is the manager of research and operations for CHECK-UP. In this position she supports the CEnR Symposium Planning Committees, CHECK-UP Research Networks, as well as the administrative side of CHECK-UP. Additionally, Alex works as a research assistant at Karmanos Cancer Institute, Office of Cancer Health Equity and Community Engagement (OCHECE) supporting the work of the Genesee County Cancer Action Council. While receiving her Master's of Social Work at the University of Michigan, her training focused on community-engaged research and health disparities. Alex also works as a research assistant under the NIA funded "Recruiting and Retaining Older African Americans into Research" funding the Healthier Black Elders of Flint program.



## CHECK-UP Team

### **Asha Freeman, MPH**

Asha Freeman is a Research Assistant in the Department of Oncology at Wayne State University School of Medicine and an affiliated staff member in the Office of Cancer Health Equity and Community Engagement (OCHECE) at the Karmanos Cancer Institute. In this role, she works closely with the Cancer Action Councils (CACs) and assists with developing an adaptable written manuscript compiled of CAC materials, knowledge, and best practices derived from the HealthLink Model. Additionally, Asha serves as a project manager for the Center for Health Equity and Community Knowledge in Urban Populations (CHECK-UP) at the Wayne State University School of Medicine. In this role, she works closely with a Total Health Foundation Grant in launching their Community Health Scholars Program.



### **Ali Fakh, BS**

Ali Fakh is a Research Assistant at Karmanos Cancer Institute, Office of Cancer Health Equity and Community Engagement (OCHECE) and Wayne State University School of Medicine (WSU SOM), Department of Oncology. Ali works closely with Cancer Action Councils (CACs) where he aims to better understand the cancer survivor and caregiver experience among minority communities. He also leads the economic burden of cancer care among Arab Americans research study. In addition, Ali serves as a program assistant for the Center for Health Equity and Community Knowledge in Urban Populations (CHECK-UP) at WSU SOM where he works to build research capacity among community members.





## WAYNE STATE CHECK-UP Center for Health Equity and Community Knowledge in Urban Populations

[www.check-up.wayne.edu](http://www.check-up.wayne.edu)

Hayley Thompson, PhD  
Director  
[hayley.thompson@wayne.edu](mailto:hayley.thompson@wayne.edu)

Carrie Leach, PhD, MPA  
Associate Director for Community Inclusion  
[carrieleach@wayne.edu](mailto:carrieleach@wayne.edu)

Alex Sass, MSW  
Manager, Research & Operations  
[alexandra.sass@wayne.edu](mailto:alexandra.sass@wayne.edu)

Asha Freeman, MPH  
Manager, Training & Capacity Building  
[freemana@karmanos.org](mailto:freemana@karmanos.org)



**OFFICE OF CANCER HEALTH EQUITY  
& COMMUNITY ENGAGEMENT**

[www.karmanos.org/karmanos/office-of-community](http://www.karmanos.org/karmanos/office-of-community)

Brittany Dowe, MPH  
Director  
[doweb@karmanos.org](mailto:doweb@karmanos.org)